

METHOD STATEMENT

Sikagrout[®] -295

DATE, : 07/2015

VERSION NO.01

SIKA EGYPT

ENG. ASHRAF ELZINY

TECHNICAL DEPARTMENT

BUILDING TRUST



Scope: *Sikagrout*[®]-295 is a pre-bagged, cementitious, high strength , precision grout that expands in two stages to sufficiently counteract the plastic shrinkage normally associated with cement grouts.
Suitable for use in tropical and hot climatic conditions.

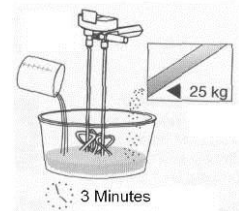
1. Preliminary Works and surface preparation

- 1.1 Concrete surfaces should be clean, sound and free from oil, grease, cement laitance and all loosely adhering particles.
- 1.2 Absorbent surfaces should be saturated thoroughly. Metal surfaces (iron and steel) should be free from scale, rust, oil and grease.

2. Mixing

- 2.1 Add 3.0 – 3.25 liter water for 25 kg powder
- 2.2 *Sikagrout*[®] 295 must be mechanically mixed using a forced action mixer or in a clean drum using a drill and paddle (max. 500 rpm).

2.3 Mixing Tools



Collomix CK

3. Application

- 3.1 Before pouring, however, let the mixed grout stand for approximately 5 minutes after mixing to allow entrapped air to escape.
- 3.2 Pour the mixed grout into the prepared area such that the grout has the shortest distance to travel. Ensure that air displaced by the grout is allowed to escape.
- 3.3 When carrying out base plate grouting, ensure sufficient head of pressure is maintained to keep mortar flowing.
- 3.4 Exposed areas of the mortar surface should be kept as small as possible.
- 3.5 After a certain minutes after the placing of the grout when there are a few air bubbles on the surface air entrainment, break the bubbles with a fine brush.



4. Curing

Treat exposed surfaces with *Antisol-E*[®] Curing Compound or use other approved curing methods as mention in the technical data sheet.

5. Notes:

- 4.1 Ensure formwork is secure and watertight to prevent movement and leaking during placing and curing.
- 4.2 For large volume area apply *Sikagrout*[®] 295 by layers each is 4 – 5 cm. thickness. Second layer must be applied after the first one hardness and cool.
- 4.3 Maximum traveling distance for sika grout 295 is 1.0 X 1.0 m.
- 4.4 Where maximum thickness exceeds 100 mm, consider the use of *Sikacrete*[®] 114.
- 4.5 At high temperatures use chilled water for mixing to keep grout temperature below 30°C.
- 4.6 In hot weather, base plates and foundations must be shaded from direct sunlight during application and curing time.
- 4.7 The addition of up to 100% of, dry, single size and clean aggregates is possible. Trials are recommended to confirm the suitability of aggregates to be employed.

For any further clarification don't hesitate to contact Sika Egypt Technical Department.

Technical Department

THE INFORMATION, AND, IN PARTICULAR, THE RECOMMENDATIONS RELATING TO THE APPLICATION AND END-USE OF SIKA PRODUCTS, ARE GIVEN IN GOOD FAITH BASED ON SIKA'S CURRENT KNOWLEDGE AND EXPERIENCE OF THE PRODUCTS WHEN PROPERLY STORED, HANDLED AND APPLIED UNDER NORMAL CONDITIONS. IN PRACTICE, THE DIFFERENCES IN MATERIALS, SUBSTRATES AND ACTUAL SITE CONDITIONS ARE SUCH THAT NO WARRANTY IN RESPECT OF MERCHANTABILITY OR OF FITNESS FOR A PARTICULAR PURPOSE, NOR ANY LIABILITY ARISING OUT OF ANY LEGAL RELATIONSHIP WHATSOEVER, CAN BE INFERRED EITHER FROM THIS INFORMATION, OR FROM ANY WRITTEN RECOMMENDATIONS, OR FROM ANY OTHER ADVICE OFFERED. THE PROPRIETARY RIGHTS OF THIRD PARTIES MUST BE OBSERVED. ALL ORDERS ARE ACCEPTED SUBJECT TO OUR CURRENT TERMS OF SALE AND DELIVERY. USERS SHOULD ALWAYS REFER TO THE MOST RECENT ISSUE OF THE PRODUCT DATA SHEET FOR THE PRODUCT CONCERNED, COPIES OF WHICH WILL BE SUPPLIED ON REQUEST.

Sika Egypt
TECHNICAL DEPARTMENT

Version given by
Eng. Ashraf Elziny
Phone: 002-01223271730
Fax: 002-03-4244604
Mail: elziny.ashraf@eg.sika.com

Method Statement
Sikagrout[®] -295
DATE, : 07/2015, VERSION NO.01