

Method Statement for Application Of **Sikaflex-PRO 3WF** for sealed non-Structural Cracks

Scope: Flexible 1-component sealant based on Polyurethane with good mechanical resistance and a permissible movement $\pm 25\%$.

1. Preliminary Works and surface preparation

- 1.1 Cracks are to be treated by the method of routing and sealing, with reference to fig (1). These cracks are widened manually or mechanically as U-shape .
- 1.2 The minimum width & depth should not be less than 8 mm.& In a case of the width will be more than 1 cm. the width to depth ratio recommended to be 2:1
- 1.3 The bond areas must be of sufficient strength, dense, dry and free of fat and dust. In combination with *Sika Primer® -3* Surface, saturated dry (S.S.D.) concrete is acceptable.
- 1.4 Cleaning of joint arrises must ensure that all friable particle and contaminations are removed.
- 1.5 Concrete should normally be prepared with an angle grinder, Absorbent substrates need a dry cleaning (by broom), non-absorbent substrates a wet cleaning (de-dusting/removal of fat), metal angle profiles e.g. by *Sika Cleaner 5*. The solvents must evaporate completely prior to sealing the joints.
- 1.6 Joint face repairs have to be patched up with epoxy mortar (e.g. *Sikadur®41CF*). Respect recommended curing time prior to sealing of the joints with Sikaflex® sealant.



2. Application

- 2.1 **Sikaflex® -Pro3WF** should be caulked into the Cracks in such a way, that no air is entrapped.
- 2.2 Substrate temperatures above +40°C may lead to damages in an early stage. Therefore, in case of increased heat - temperature on the surface of the adjacent building components must be measured.
- 2.3 Tooling/ Finishing of sealant using detergents and soap are not recommended, they may reduce the chemical resistance and could lead to damages in a later stage.

3. Backfilling

For **Sikaflex® -Pro3WF** use only closed cell, sealant compatible foam backer rods (e.g. high-resilience polyethylene foam rod) **Sika Backing Rod®**. Using the backer rod the depth of the joint can be limited, radius should be approx. 20% bigger than the width of the joint.

Use only blunt implements when placing backer rod to avoid damaging of the backer rod surface that could release gases into the sealant.

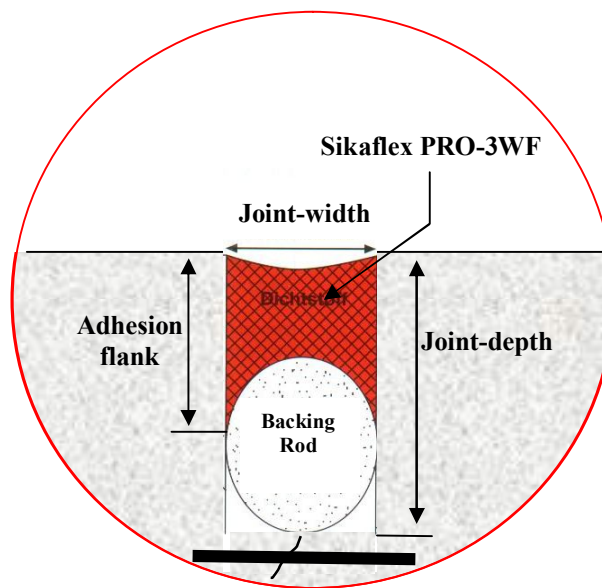
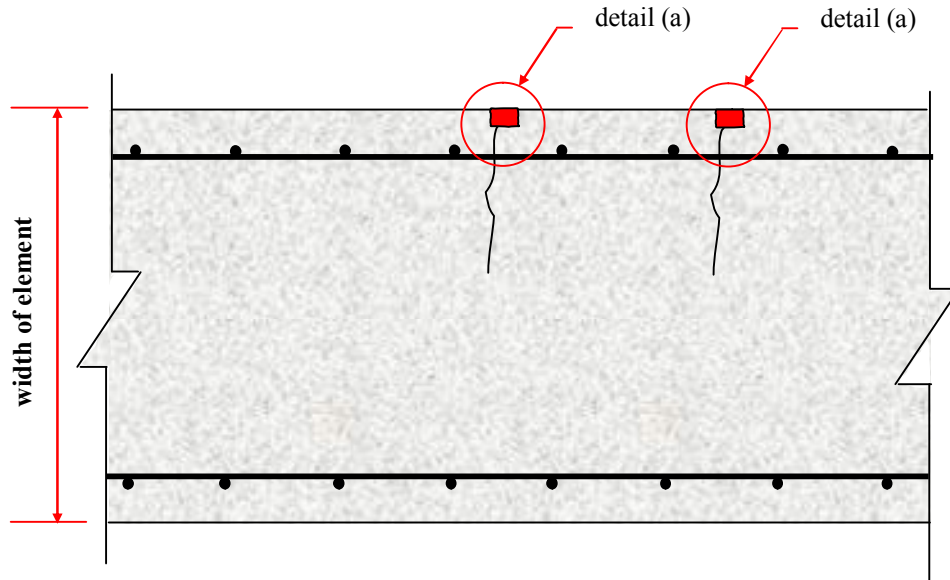
4. Notes:

- At approx. 20°C full chemical and mechanical resistance is achieved after 14 days.
- Chemical exposure and joint movements more than 10% are not permitted during curing.
- Over painting of the joint is not permitted as a rule.
- **Sikaflex® -Pro3WF** is not compatible with bitumen and fluxoils. Direct and indirect contact with bitumen is not permitted.
- Slight colour deviation may occur by environmental influences (chemicals, high temperatures, UV-radiation). This does not influence the properties.

The information, and, in particular, the recommendations relating to the application and end-use of Sika products, are given in good faith based on Sika's current knowledge and experience of the products when properly stored, handled and applied under normal conditions. In practice, the differences in materials, substrates and actual site conditions are such that no warranty in respect of merchantability or of fitness for a particular purpose, nor any liability arising out of any legal relationship whatsoever, can be inferred either from this information, or from any written recommendations, or from any other advice offered. The proprietary rights of third parties must be observed. All orders are accepted subject to our current terms of sale and delivery. Users should always refer to the most recent issue of the Product Data Sheet for the product concerned, copies of which will be supplied on request



Construction



For any further clarification don't hesitate to contact Sika Egypt Technical Department.

Technical Department

The information, and, in particular, the recommendations relating to the application and end-use of Sika products, are given in good faith based on Sika's current knowledge and experience of the products when properly stored, handled and applied under normal conditions. In practice, the differences in materials, substrates and actual site conditions are such that no warranty in respect of merchantability or of fitness for a particular purpose, nor any liability arising out of any legal relationship whatsoever, can be inferred either from this information, or from any written recommendations, or from any other advice offered. The proprietary rights of third parties must be observed. All orders are accepted subject to our current terms of sale and delivery. Users should always refer to the most recent issue of the Product Data Sheet for the product concerned, copies of which will be supplied on request

