



# METHOD STATEMENT

## Sika Ceram®

DATE, : 07/2015

VERSION NO.01

SIKA EGYPT

ENG.ASHRAF ELZINY

**TECHNICAL DEPARTMENT**

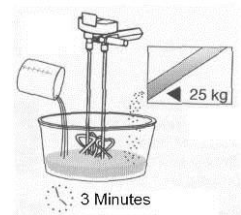
**Scope:** *Sika Ceram*<sup>®</sup> is a single component, pre-packed tilling adhesive mortar containing cement with selected grades of silica, sand and several admixtures.

## 1. Preliminary Works and surface preparation

- 1.1 Concrete surfaces should be clean, sound and free from oil, grease, cement laitance and all loosely adhering particles.
- 1.2 Absorbent surfaces should be saturated thoroughly. Metal surfaces (iron and steel) should be free from scale, rust, oil and grease.

## 2. Mixing

- 2.1 The recommended mortar consists of 5.0 litres water to 25 kg Powder.
- 2.2 Mix well with a hand trowel.
- 2.3 For large volume mixing. A slow speed drill is recommended.



## 3. Application

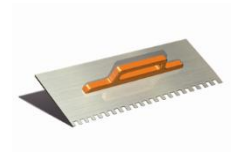
- 3.1 Pre-soak the repair surface with clean water and then allow surface to dry (Surface Saturated Dry – SSD).
- 3.2 Apply the surface with a mortar of *Sika Ceram*<sup>®</sup> using a “V” notched trowels for small tiles & Fix tiles.



- 3.3 Apply the surface with a mortar of *Sika Ceram*<sup>®</sup> using square notched trowels for bigger tiles & Fix tiles.



### 3.4 Fix Tiles



#### 4. Curing

Waiting time for grouting (*Sika Tile Grout*<sup>®</sup> can be used)

For wall : after 7 to 8 hours (depending on temperature).

For floor : after 24 hours.

*For any further clarification don't hesitate to contact Sika Egypt Technical Department.*

---

#### Technical Department

The information, and, in particular, the recommendations relating to the application and end-use of Sika products, are given in good faith based on Sika's current knowledge and experience of the products when properly stored, handled and applied under normal conditions. In practice, the differences in materials, substrates and actual site conditions are such that no warranty in respect of merchantability or of fitness for a particular purpose, nor any liability arising out of any legal relationship whatsoever, can be inferred either from this information, or from any written recommendations, or from any other advice offered. The proprietary rights of third parties must be observed. All orders are accepted subject to our current terms of sale and delivery. Users should always refer to the most recent issue of the Product Data Sheet for the product concerned, copies of which will be supplied on request.

**Sika Egypt**  
TECHNICAL DEPARTMENT

**Version given by**  
Eng. Ashraf Elziny  
Phone: 002-01223271730  
Fax: 002-03-4244604  
Mail: elziny.ashraf@eg.sika.com

Method Statement  
Sika Ceram<sup>®</sup>  
DATE, : 07/2015, VERSION NO.01

**BUILDING TRUST**

